

**Capital Group, Orange County Facility, Irvine, CA**  
**Architects: Pei Cobb Freed and Partners, New York**

This Office campus was created in two phases. The capital Group Office Campus accommodates 1,000 employees on a 52-acre site in Irvine. In Phase 1 the low lying complex consisted of several low-rise structures, a 3 story office building with 235,000 sf, two five-story office buildings with 150,000 sf each and a conference center with 15,000 sf. All buildings were linked with terraces, verandas and landscaped courtyards. Phase II incorporated two four-story office buildings and an adjacent four-level parking structure with 1,072 spaces. The site includes a stand-alone central services building, which includes a restaurant and gym.



**Experian Corporate Headquarters, Costa Mesa, CA**

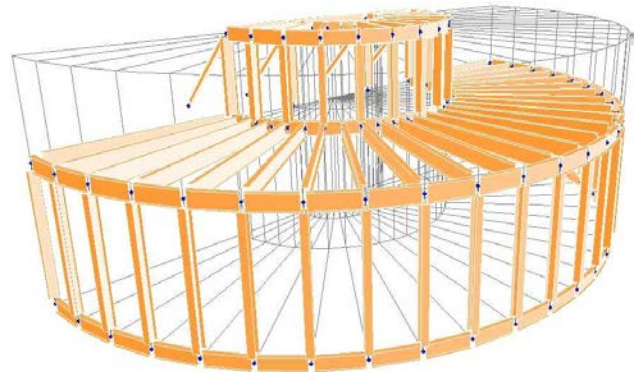
This complex consists of three 4-story office buildings comprised of 360,000 square feet. The design includes structural steel moment frames and bolted connections. The main building also includes a 28 foot glass enclosed lobby with small café.



**Amgen Corporate Headquarters, Thousand Oaks, CA**  
**Architects: Johnson Fain Partners / I.M. Pei (Atrium)**

NYA was the Structural Engineer for this two phase, 3 building project which consisted of office and conference facilities. During Construction phase, the Amgen Executives in Bldg. 38 wanted to re-design their Executive Suite. They hired Architect I M Pei to design a 2 story atrium and supporting facilities for the executives on the 4<sup>th</sup> and 5<sup>th</sup> floors who wanted a serene atmosphere. NYA designed the intense structural shape using 3D modeling and advanced glass technologies.

The campus features a cafeteria, coffee shops and an on-site fitness center. They also have on-site childcare and gift shops.



**Apple Campus 2, Cupertino, CA**

Nabih Youssef served as the Structural Plan Reviewer for the main structure Apple Campus 2 - Phase 1 project and is currently serving as the Structural Engineer of Record for the Apple Campus 2 – Phase 2 project along Tantau Avenue. The campus will consist of a 300,000 sf Office Building, a 225,000 sf Testing Facility, a 10,000 sf Visitor’s Center and a 20,000 sf Multi-Media building.

This project is base isolated and in the shape of a large wheel. The building is to be approximately 2.8 million square feet, house over 1,000 employees, and feature many amenities such as a full size restaurant for 3,500 guests, interior and exterior open spaces, gymnasium with shower facilities for bikers, child care, and a visitors center. NYA is providing peer review for the main structure for the City of Cupertino, and structural engineering design for additional structures.



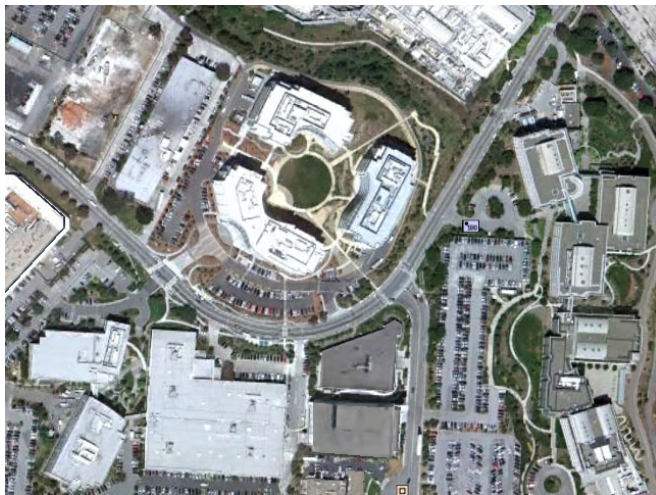
**Genentech, South San Francisco, CA**

**Genentech Buildings 31,32, 33:**

The three five-story steel framed office buildings serve as the corporate headquarters for Genentech. The three buildings were constructed around a circular plaza atop the bluff on the Genentech campus in South San Francisco and overlook the San Francisco Bay. The circular form resulted in geometrically complex floor plans. The lateral systems consisted of special steel moment resisting frames.

**Genentech Buildings 61, 62 and 63:**

The steel framed office buildings are three, five and six stories and are located on the West Campus of Genentech. The lateral systems consist of special steel moment resisting frames. A small café and gym were included in these buildings.



**Playa Vista Office Campuses, Playa Del Rey, CA**

Conceptual master planning and executive structural engineering services for Maguire Partners including new / renovated studio buildings, offices, commercial / retail buildings, and residential buildings.

**Campus at Playa Vista, Playa Del Rey, CA**

NYA provided the structural engineering for a four building office complex designed by Gensler totaling 350,000 sf. located within Playa Vista. The site is adjacent to Central Park, a large open space for the community. A café is provided for all tenant, with each anchor tenant having their own private café as well.



**Horizon at Playa Vista, Playa Del Rey, CA**

Horizon is an office complex located in the same area is 15 acres and features 950,000 sq ft of office space. It was also the first LEED Gold office building 'core and shell' in Los Angeles. Horizon features three separate parcels. Parcel A houses a café with a full size kitchen and Parcel B features a large gym for the campus occupants.



**Playa Jefferson (12777 Jefferson), Culver City, CA**

This 200,000 rsf office campus is made up of four buildings with covered areas and lots of open public space.

